

THE distributor

giving you a head start

HARDWARE · AUTOMOTIVE · MECHANISATION PARTS · OUTDOOR · IRRIGATION · POWER PRODUCTS · CONSTRUCTION

VOLUME 10
AUGUST / SEPTEMBER 2016

IN THIS ISSUE:

PRODIST RECEIVES
AFROX TOP
DISTRIBUTOR AWARD
3

PROTEK SE RIGLYNE VIR
DIE VERSORGING VAN
GRASPERKE
14

DRUPBESPROEING
IN KORT
17

CREATE COMPLETE
RAIN HARVESTING
SYSTEM
22



SKUDO

PROTECTIVE WEAR



PRODIST INTRODUCES SKUDO PROTECTIVE WEAR
PAGE 10



Offering A Full Range of PVC Gumboots and Safety Boots.



SHOVA



MARINA



CLIPPER

100% made in South Africa since 1977.

Certified as ISO EN 20345:2011, 20347:2014



EDITORIAL TEAM:

EDITOR IN CHIEF

Marlon Abrahams

Tel: 018 464 7349

marlon.abrahams@senwes.co.za

ADVERTISING MARKETER

Mariëtte Hugo

Tel: 018 464 7505

mariette.hugo@senwes.co.za

DESIGN & LAYOUT

Zorene Koopman

Tel: 018 464 7510

zorene.koopman@senwes.co.za

The Distributor is produced by Senwes Communications and is distributed bi-monthly.

Contact Marlon Abrahams at marlon.abrahams@senwes.co.za with contributions.

CONTENTS • INHOUD

INTRODUCTION

DEAR READERS AND ADVERTISERS	2
LUXURIOUS SILKY FINISHES IS THE LASTING IMPRESSION	2

NEWS

PRODIST IS THE "TOP SMOUS"	3
NEW SHOWROOM AT PRODIST	3
MECH FOCUS: PRODIST STRIVES TO SUPPLY A GOOD QUALITY AND WIDE RANGE	4
PRODIST BRINGS YOU THE BEST WITH NBR	5
BELLOTA GETS INTO JD HALL OF FAME	6
TIME TO SPRING-CLEAN	7
NEW PRODUCTS	8
NEW RANGE FROM PRODIST	10
KOM ONS BRAAI - 24 SEPTEMBER IS BRAAIDAG ... IS JY GEREED!?	12
FEND OFF THE LAST OF WINTER'S CHILL WITH JD	12
PRODIST CONTINUES TO DELIVER WITH TAICHUNG'S ACE TOOL MAKER	13
TEN TOP TIPS FROM ENERGISER TO PROLONG YOUR BATTERY LIFE	13
PROTEK SE RIGLYNE VIR DIE VERSORGING VAN GRASPERKE	14
SPRAY-PAINTING TECHNIQUES FOR THE BEST FINISHES	16
DRUPBESPROEING IN KORT	17
EFFICIENT IRRIGATION SYSTEMS WITH HUNTER	18
WHY DO MOZZIES ATTACK SOME PEOPLE AND AVOID OTHERS?	20
INTRODUCING THE NEW FALCON FLAIL CUTTER	21
HOW TO CREATE THE COMPLETE RAIN HARVESTING SYSTEM	22
MAAK SEKER JOU PAPEGAAI BLY PRAGTIG	24

agpro

- Stainless steel lance
- Built-in funnel
- Brass nozzle
- Spare parts available
- Available in 1L, 2L, 5L, 8L, 12L and 16L

For more information go to
www.prodinst.co.za

prodinst 
demand-supply-trust

Advanced pressure sprayer technology





DEAR READERS AND ADVERTISERS



“TIME FLIES WHEN YOU’RE HAVING FUN” AS THE SAYING GOES, OR IN OUR CASE WHEN WE’RE HARD AT WORK.

In this edition some of our hard work is recognised by the acceptance of an award from a supplier. We also recognise time flying by, by acknowledging the season of Spring already upon us, with several articles introducing products to prepare your garden and home for Spring. Don't miss the list of Revet cleaning products and the article on the origins of “Spring Cleaning” on page 7.

September 24 is the day we South Africans celebrate our heritage on the official Heritage Day. However, being South Africans we've changed the day to national Braai Day and if you breathe in deeply you can already smell the manne getting ready to “haal uit en wys” their braai skills on the day. Look out for our range of braai goodies, from spices to bricks to potjies and everything you need to have a super Braai Day on page 12.

Ever been to Taichung in Taiwan? Apparently it's regarded as a gateway to exploring the island's mountainous interior. It's also the head offices of the A-Kraft Tools Manufacturing Company, one of Prodist's trusted suppliers. Read more about their products and quality offering on page 13.

Did you know that downing a cold one on a hot summer's night can keep the mozzies at bay? However if that fails, we have a range of effective bug repellents from Raid to do the trick. Read all about it on page 20.

Our cover features the latest new range of protective gloves from Skudo, a brand created by Prodist to represent a range of gloves, headwear and protective clothing, directly sourced from hand-picked factories. This exciting new range will replace a large part of the current Agpro range. We believe that this brand will grow to be one of the the leading brands of protective wear. Read all about it on page 10.

All this and loads more in this Spring edition. May the change of season herald a change of productivity and prosperity for the farmers of our land who have just come through what is hopefully the tail-end of a crippling drought. Weather forecasters have predicted good summer rains ahead, as the El Nino effect dissipates and the La Nina effect takes form. Let's hope they're right and the farmers have something to celebrate at harvest time.

Have a good Spring season. **PD**

Brand Thomson

ADVERTISE WITH US!

CONTACT ME FOR ALL YOUR ADVERTISING NEEDS:

Mariette Hugo · Advertising Marketer

Tel: 018 464 7505

Cell: 076 412 9756

Fax: 086 407 7100

LUXURIOUS SILKY FINISHES

IS THE LASTING IMPRESSION

Dulux has a tried and tested reputation for quality, silky finishes as well as rugged, durable exterior paint applications. The featured products below are essential if you're planning a spring clean upgrade to the interior or exterior of your home or business this spring.

Weatherguard

Dulux Weatherguard is the premium choice in exterior textured coatings. The unique properties of Maxiflex makes hairline cracks a problem of the past and the textured finish ensures that minor plaster imperfections remain hidden. It's tough, durable and offers you the ultimate weather resistance.



P5147128

Gloss Enamel

Dulux Gloss Enamel is a high quality enamel that is tough and colour fade resistant. For a high gloss finish and superior protection for interior and exterior surfaces, you can't go wrong with Dulux Gloss Enamel. It is scratch and stain resistant, high gloss durable finish and its colour fade resistant as well.



P5147242

Luxurious Silk

Dulux Luxurious Silk is the ideal choice for an interior of style and distinction as you transform your walls with long lasting luxury. A low odour premium interior wall paint with a mid sheen finish and supreme stain resistance. All products are available in a wide variety of colours from the Dulux Colour System. **PD**



P5147004

PRODIST IS THE "TOP SMOUS"

ACCORDING TO THE URBAN DICTIONARY, A SMOUS IS SOMEONE WHO CAN BUY AND SELL ANYTHING TO ANYONE AT A PROFIT.

And so it was all smiles at the recent Afrox Sales Awards when Prodlist received the Top Smous-award for best Afrox Distributor over the last six months. The award criterion was based on best growth in sales and margins over the six month period January to June 2016.

Prodlist MD, Brand Theunissen, accepted the prize at the event which was held at the OR Tambo Premier Hotel in Johannesburg at the end of June. 250 delegates were in attendance, representing Afrox sales and marketing personnel from SA and Emerging Africa.

"Receiving this award is a feather in our cap at Prodlist. It is proof that our commitment to service excellence and customer satisfaction is bearing fruit. We look forward to constantly improving and to enhancing our good professional partnership with Afrox going forward," said Brand.

The prizes were awarded by Schalk Venter, Afrox MD. Afrox's Heleen Uys walked off with the top sales person for distributors award in the Super Charged category. This was the inaugural awards ceremony, designed as an incentive for the sales team and plans are underway to make it an annual event. **FD**



Dries Grobler, Afrox Head of Light Industries with Heleen Uys, Afrox Account Manager: Indirect National Customers.



Afrox MD Schalk Venter with Prodlist MD Brand Theunissen and Nazmi Adams, Afrox General Manager: Sales & Marketing

AFROX

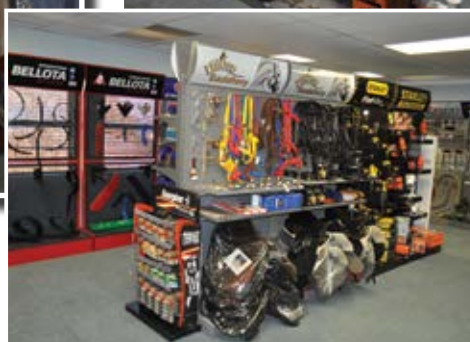
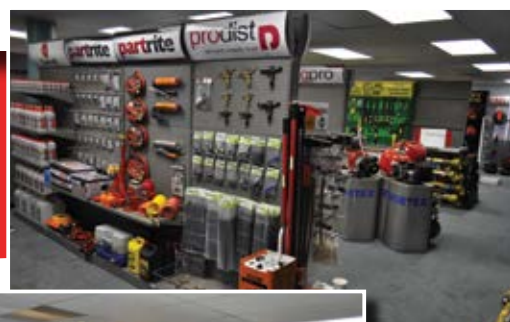
NEW PRODIST

DESCRIBING THE STEPS IN MERCHANDISING A RANGE OR EVEN SENDING A CLIENT AN EXCEL SHEET WITH INFORMATION ARE BOTH GOOD WAYS TO EXPLAIN THE POSSIBILITIES OF GOOD MERCHANDISING.

However, Prodlist has gone a step further by creating a new showroom for our clients' viewing and experiential pleasure. Our new showroom boasts a variety of merchandised ranges that will complement any store.

When you visit the showroom at our head office in Kempton Park, you will also enjoy the company and advice of a knowledgeable product manager who will be at hand with answers to any questions you may have. All ranges displayed can be ordered via an order sheet and price list with suggested orders quantities. Although the full ranges are displayed in the showroom, more compact shelf concepts are available for clients with smaller stores.

SHOWROOM AT



New ranges will constantly be added to the displays and the showroom will be a dynamic image of what Prodlist has to offer.

An exciting addition to the shelf concepts are the new John Deere shelves, which are not only a durable and attractive add-on to any outlet, but are also practical and compact. The showroom will also be used as a training facility and meeting area. **FD**

MECH FOCUS

PRODIST STRIVES TO SUPPLY A GOOD QUALITY AND WIDE RANGE OF COMPONENTS

FOR THE AGRICULTURAL PTO MARKET

Ivan Kirkcaldy – National Sales Manager: Mechanisation

This is achieved by supplying brand names like Comer, who have many years' experience in the production of this range. Suppliers are scrutinised to assure that quality and consistency of the products can serve as a guarantee to our customers. In the development of this range Prodist has added the "lemon profile" and "category eight range" to our already large variety of PTO components on offer.

Prodist also attempted to create a better awareness of this range through the marketing of shelving and have developed a new shelf to accommodate and display the products effectively. An information and guideline chart has also been added to the shelf to provide added assistance to sales staff.

To enable our customers to market this product Prodist also created a training programme to train staff to make an accurate recommendation to their customers. This can be arranged with the relevant regional sales manager (available on our website). Below are some points that are discussed during training.

WHAT YOU NEED TO KNOW WHEN MAKING RECOMMENDATIONS:

1. What is the HP or kW rating of the implement gearbox to be driven?
2. What is the PTO speed of the output shaft of the tractor - 540 or 1000rpm?
3. What is the distance between the output shaft of the tractor and the input shaft of the implement when connected fully?
4. What size and type of spline does the tractor output shaft and implement input shaft have?
5. At what angle is the implement required to work?



6. What type of implement will be operated and is a clutch required? If so, what type of clutch?
7. Make the customer aware of the information booklet supplied with each complete shaft to ensure correct application and operating procedures are adhered to as recommended.

Did you know?

A Power Take-Off (PTO) is any of several methods for taking power from a power source, such as a running engine, and transmitting it to an application such as an attached implement or separate machine. Most commonly, it is a system comprising of a splined output shaft on a tractor or truck, designed so that a PTO shaft, a kind of drive shaft, can be easily connected and disconnected, and a corresponding input shaft on the application end. The power take-off allows implements to draw energy from the engine. Semi-permanently mounted power take-offs can also be found on industrial and marine engines. These applications typically use a drive shaft and bolted joint to transmit power to a secondary implement or accessory. In the case of a marine application, such shafts may be used to power fire pumps. Splines are ridges or teeth



on a drive that mesh with grooves in a mating piece and transfer torque to it, maintaining the angular correspondence between them. (Source – Wikipedia) **FD**



PRODIST BRINGS YOU THE BEST WITH NBR



PRODIST IS THE SOLE IMPORTER AND DISTRIBUTOR OF THE NBR BRAND IN SOUTH AFRICA.

The Xiamen NBR Bearing Company Limited is one of the world's leading manufacturers of a wide range of bearings, housings, agricultural and industrial bearings, spherical plain, roller bearings, steel balls, automotive, clutch, hub bearings, water pumps and many other similar products. Based in China, NBR has a solid reputation with over 30 years of experience behind the brand. As the distributor of NBR products in South Africa, Prodist can unreservedly recommend the brand. NBR products are made from different materials as the functionality requires, whether it be chrome steel,

stainless steel, thermal plastic, etcetera. Quality is guaranteed by certification ISO9001:2000 from UKAS, the United Kingdom Accreditation Service, which is the sole national accreditation body for the United Kingdom. UKAS is recognised by government to assess quality against internationally agreed standards, organisations that provide certification, testing, inspection and calibration services. The NBR range of products can be used in various industries from food processing, mining, agricultural machinery, automobile manufacturing, electrical machinery and many others.

Prodist constantly updates stock ranges and with the help of NBR it has also developed a disc harrow bearing with its fastening kit.

This product has been tested in South African conditions and has done extremely well compared to competitor brands.

The product will be available soon and will offer good value for money and a quality part to the OEM-market and end-user. **PD**



BAA0004

NBR

Power Transmission Products



- Agricultural Bearings
- Industrial Bearings
- Automobile Bearings
- Universal Joints & Roller Chains



XIAMEN NBR BEARING CO.,LTD
Since 1975, Taiwan



BELLOTA GETS INTO JD HALL OF FAME

BELLOTA AGRISOLUTIONS HAS ENTERED THE PRESTIGIOUS JOHN DEERE HALL OF FAME AFTER BEING RECOGNISED AS A PARTNER-LEVEL SUPPLIER IN THE ACHIEVING EXCELLENCE PROGRAMME FOR THE FIFTH YEAR RUNNING.

Prodlist MD, Brand Theunissen, applauded Bellota for this significant achievement. "Prodlist is a distributor of Bellota products as well as a wide range of John Deere apparel. This is an auspicious and respected award. We are proud to be associated with these two leading brands," says Brand.

The Partner-level status is John Deere's highest supplier rating. Hall of Fame status is given after a supplier attains a Partner-level rating for five consecutive years. **FD**



Steve Garrette: CEO of Bellota Agrisolutions
Kim Narvesson: Supply Base Manager of John Deere
Eduardo Urrestarazu: Vice-President, Commercial and Marketing
Peter Svendsgaard: Sales account Manager



NEW IMPROVED DESIGNS

made with the farmer in mind

- Handle for ease of use & carrying
- Bayonet interlocking system provides secure fastening for locking and carrying
- Graduated for medication
- Optional extras: anti-drown ring & fount elevator

Drinkers



NEW 4L WATER FOUNT WITH HANDLE



HANDLE FOR EASE OF USE & CARRYING



- Large capacity for feed, making refilling less labour intensive
- Holds up to 5 kg of starter mash
- Narrow trough with built in lip designed to keep chicks out and prevent spoilage and wastage of feed

Feeders



NEW BULK CHICK FEEDER

See our wide range of products at www.poltek.co.za

Tel: 0861 POLTEK (765835)

Tel: 011 866 1240/2 or 011 865 2038/9

Fax: 011 865 1722

e-mail: quotes@custommoulders.co.za

e-mail: sales@custommoulders.co.za

POLTEK®/Custom Moulders® and the POLTEK® logo are all registered trademarks of Custom Moulders®. E&OE



POLTEK

LEADERS IN PLASTIC POULTRY TECHNOLOGY



Revet

NEWS

TIME TO

SPRING-CLEAN

SOME RESEARCHERS TRACE THE ORIGIN OF SPRING-CLEANING TO THE ANCIENT JEWISH PRACTICE OF THOROUGHLY CLEANSING THE HOME IN ANTICIPATION OF THE SPRING-TIME MEMORIAL FEAST OF PASSOVER.

Traditionally, the Church thoroughly cleans the church altar and everything associated with it on Maundy Thursday, the day before Good Friday Northern Hemisphere Spring. Spring-cleaning persists today in Greece and other orthodox nations. Another possibility suggested that the origins of spring-cleaning date back to the Iranian Norouz, the Persian new year which falls on the first day of spring. A similar tradition is the Scottish "New Year's cleaning" on Hogmanay (December 31), a practice now also widespread in Ireland, New Zealand and North America.

Well it doesn't matter whether you subscribe to these historical musings or if you're just a clean freak, with Revet's quality approved cleaning products you can get your house ship shape for Braai Day if you like, we don't mind.

Check out these superb cleaning products.

Dry Foam Carpet Shampoo – It's ideal for carpets, upholstery and car seats and can be used with a machine scrubber or manual application. Follow the instructions on the label to the letter and your carpets will look good as new.



REVETC05

Dandy – Will leave your kitchens and bathrooms, well, just dandy. It's an intensive ammoniated cleaner, mild on all surfaces as an abrasive liquid that cleans without scratching. It's perfect for use on sinks, drinking fountains, bathtubs, shower stalls, toilet bowls, kitchen surfaces, stove tops, stainless steel, ceramic, chrome and porcelain surfaces.



REVETAC05

Revet Pine Gel comes with natural germ-killing properties. It contains a high concentration of surfactants, as well as spin oils that act as a natural disinfectant, making this an excellent universal all-round cleaner and disinfectant. It is soluble in hot or cold water and it deodorises, sanitises and cleans all in one. It won't irritate your skin and is very easy to use.



REVETPG05

SDR – SABS Approved SANS 1828 – All-purpose Heavy Duty Cleaner. You need SDR to get rid of the bad boys in the dirty business. You might recognise them as oil, fat and grease, and pretty much anything in-between that refuses to vanish. SDR is suitable for the cleaning of all surfaces, from metals, painted surfaces, carpets, fabrics and general cleaning of office and household equipment. Follow the instructions on the label to make sure you have the correct concentration for the job required.



REVET183

Star Dish will leave your dishes twinkling like little stars in the clear Karoo night sky. It is more concentrated and rinses off better, which creates sparkling dishes, pots, pans and cutlery.



REVETMAX01

Window Kleen is an easy to use, spray-on, wipe-off cleaning machine. It is streak-free, leaves no greasy residue and gives your windows a lasting shine. Use as supplied and do not dilute. **PP**



Spring with Lasher

Spring is the time of plans and projects



Medium Duty Secateurs



3 Piece Garden Set



No. 2 Digging Spade



4 Prong Digging Fork



Combination Rake



Deluxe Garden Rake



Visit the Lasher Tools App to view our monthly Planters Guide & Gardening Projects (Available on Android and iOS)

Tough, Reliable Tools. Guaranteed.

New

PRODUCTS



BBQ FIESTA SEASONING

Comes in a reseal-able Handipak and is perfect for preparing your braai meat or even just sorting out your favourite cut of meat or chicken in the pan.

CN4412007



GAZEBO

Spring is here and summer is not far behind. The Base Camp gazebo is an absolute must this summer for sturdy shading on the lawn, in the bush and even on the beach.

F003



RUBBISH BIN

Roto-moulded for durable quality and strength. Perfect for storage or refuse removal.

LB076B

GREAT CHICKEN SEASONING

Be warned, store far away from the chicken before use, because your chicken will run towards this incredible blend of flavourful spices and cayenne pepper. Do not say you weren't warned!

CN4402651



BBQ WITH GARLICK SEASONING

A mouth-watering combination of spice sensations with just a subtle hint of garlic to bring out all the flavours of your meat on the braai, in the pan or in the oven.

CN4408046

FISH SEASONING

The art of cooking up the best fish is in the subtlety of the flavours, which need to be coaxed to perfection with the help of Crown National's Fish Seasoning. Try it once and you'll be hooked forever!

CN04402166



• OUTDOOR • IRRIGATION • POWER PRODUCTS • CONSTRUCTION

HESSIAN WOVEN FABRIC

This dense woven fabric has a long historic track record for use in making bags, ropes, nets, rugs and event carpets. The name stuck after the Hessian soldiers wore it as part of their uniforms back in the day.

JHC137214



TWINSAYER WIPER ROLL DISPENSER WALL MOUNTED PLASTIC

Plastic frame with serrated tear-off edge, paper wiper roll refills available, mounting screws and wall plugs included, suitable for dispensing wiper rolls up to 750m long and with a maximum width of 260mm dimensions wxhxd: 440x310x410mm

TS0654



DYNAMIC REFUSE BAGS

Comes in a roll of 20 bags and is built tough for tough garbage removal.

DPBSOROLL

DigiTech®

SECURITY

Alarms
CCTV systems
Access Control



DT258



DT225



DT242



DT015



DT013

Adapters
Multiplugs
Extensions
Extension Reels

DigiTech®

ELECTRICAL

NEW RANGE FROM PRODIST



SKUDO
PROTECTIVE WEAR

PRODIST IS PROUD TO LAUNCH A NEW RANGE OF QUALITY, WELL-PRICED PROTECTIVE WEAR UNDER THE SKUDO BRAND. THE FIRST PRODUCT LINES TO BE MADE AVAILABLE CONSIST OF FAST MOVING WORKERS GLOVES. THE RANGE WILL SOON BE EXTENDED TO INCLUDE A FULL RANGE OF SAFETY WEAR.

The Skudo brand, which has been developed by Prodist, represents the finest safety wear products available on the planet and Prodist has embarked on sourcing the best from the best suppliers around the globe. "We have really gone the extra mile in bringing these products to the South African market by hand-picking factories and suppliers across the global market. I think the consumer will appreciate the variety, reliability and most of all the quality of the product and I have no doubt that the brand reputation will grow rapidly," says Prodist MD Brand Theunissen.

Have a look at the selection below and contact us to place your orders.

Red PVC Open Cuff Gloves 35 cm - AGGPVC20HW

Heavy weight rough finish, for use against strong acids and bases, salts, other water solutions and alcohols.



Red PVC Open Cuff Gloves 27 cm - AGGPVC10

Use against strong acids and bases, salts, other water solutions and alcohols.



PVC Dipped with Knitted Wrists Gloves 27 cm - AGGPVCKWHD

General purpose heavy duty construction gloves with knitted wrist.



Rubberised with Knitted Wrist Gloves 27 cm - AGRUB

10 gauge light, yellow polyester gloves with green crinkle latex coated on palm with knitted wrist. Enhanced grip and durability. Great for packaging, construction, landscaping and gardening.



Cotton Gloves 27 cm - AGGCC

Knitted, used to improve grip when handling slippery objects or to insulate hands from mild heat or cold.



Polka Dot Gloves 27 cm - AGGLOVEDOT

General purpose gardening gloves.



Soft Leather Gloves - AGGTIG

VIP Light yellow pigs grain leather driver or tig welder gloves with wing thumb, unlined.



Candy-striped Pigskin Grain Leather Gloves 27 cm - AGGLPCS

Pig split leather, striped cotton back and pasted cuff, half lined. Both comfortable and tough. Awing thumb makes it easy to grip large objects like PVC piping.



Cows Leather Split RFN Palm Gloves 27 cm - AGGLCS

Cows split leather gloves, yellow reinforced palm and index with striped cotton back, rubberised cuff, half lined. Keeps your hands safe and comfortable in working conditions.



Black Builders' Gloves 35 cm - AGBUILD

Latex industrial gloves. A good grip in wet or dry environments. Light hand protection from liquids and debris.



Welding Gloves 27 cm - AGWELD1

Cows split leather gloves, full palm, full lining inside, one piece leather back. Especially treated to endure the heat and sparks produced by welding.



Welding Gloves 40 cm - AGWELD2

Cows split leather gloves, full palm, full lining inside, one piece leather back. Especially treated to endure the heat and sparks produced by welding.



Latex Household Gloves 35 cm - AGGRHLL

Perfect for general household cleaning jobs. Cotton flock lining for increased comfort and textured fingers and palms for gripping power. **FPD**





Small on size, big on delivery

Handipack

The 6kg Afrox Handipack cylinder provides a unique package of portable energy. It's safe, convenient, portable, reliable and easy to use in your business or at home.

African Innovation. German Precision.



KOM ONS BRAAI - 24 SEPTEMBER IS BRAAIDAG...

IS JY GEREED!?

AS JY NIE GEREED IS NIE MOET JY NOU JOU VOORRADE AANVUL MET 'N REEKS BRAAIDAG-OPLOSSINGS EN PROMOSIEPRODUKTE. PRODIST VERSKAF ALLES - 'N VERSKEIDENHEID BRAAIERS, ROOSTERS EN VERBRUIKS-GOEDERE OM AAN ELKE VERBRUIKER SE BEHOEFTE TE VOLDOEN.

BSB4



Braaistar

Vooraanstaande handelsmerk braaiprodukte is nou by Prodist beskikbaar.

Die reeks bestaan uit aanstekers, 'n 4kg-verpakking hoë kwaliteit brikette en 'n 4kg verpakking Namibiese houtskool teen mededingende pryse.

Lighterballs

Innoverende, maklik-om-te-gebruik en ekonomiese fireball aanstekers is omgewings-vriendelik, kry 'n vuur aan die brand met een enkele bal en dit is reukloos.



LIGHTB6

Basecamp vleklose staal braaiers

Uniek geplaas sover dit prys en kwaliteit betref, is ons vleklose staal braaiers beskikbaar in gas- en steenkoolmodelle. Dié braaier het 'n innoverende hoogterstelbare steenkoolhouer wat 'n gunsteling onder kieskeurige braaimeesters is en die groot en klein modelle is van ons topverkopers.

Basecamp ketelbraai

Ons het ons eie Basecamp ketelbraaier, wat perfek is vir ketelbraaidoeleindes. Uitstekende waarde en kwaliteit maak hierdie 'n Braaidag-wenner.



JARD8094



KEST22023

Campingaz

Vir die beste gasbraaiers teen uitstekende pryse, kry die LS en LSX gasbraaiers. Met die beste infrarooi branders in die LSX model en 'n reeks ander eienskappe, is hierdie braaiers die hartewens van enige braaimeester wat nog nie een besit nie.

Hotrods

'n Braai wat maklik verskuif kan word en 'n reeks vleklose staal roosters is beskikbaar. PD

FEND OFF THE LAST OF WINTER'S CHILL WITH JD

Sure, spring is in the air, or so they say, but we all know that Mother Nature has a habit of prolonging the winter chill well into September and as sure as pigs can't fly, there will be an inevitable cold snap lurking in September. Well, fear not, 'cos JD's got your back. Actually John Deere's got your feet, and your front for that matter too. Have a look at these winter winners to get you through the last bit of chill. PD

Ladies Cowgirl Boots - JDFSL0004C

Equally stylish with your favourite pair of long denims in winter and an evergreen hit in summer with your denim shorts or skirt.



Unisex Hoody Zip - JDBCK0002C23

This is the one you need to be ready for that unexpected spring cold snap. Feel snug as a bug in a rug, perfect for men or ladies.



John Deere Mens Brown Leather Jacket - JDBG417

Genuine leather jacket, stitching throughout with zip-off fur collar.

John Deere Ladies Dark Khaki Jacket

Quilted genuine leather jacket in khaki and dark khaki. Closes with a zip and button studs. Draw-string in waist comes together at the back to create a sleeker appearance and tighter fit.



JDBG429



JDBG428



Long shorts - JDRW0003

Ladies long shorts available in beige and ideal for blending into the bushveld on a brisk walk or for just lounging around, waiting for summer.

PRODIST CONTINUES TO DELIVER WITH TAICHUNG'S ACE TOOL MAKER

Taichung is an industrial city on the western coast of central Taiwan. It's a gateway for exploring the island's mountainous interior, including nature areas like Sun Moon Lake, popular for boating and hiking. In the bustling city centre are museums, shops and the ornate brick Taichung Station, a legacy of the Japanese colonial period. It is also the home of the A-Kraft Tools Manufacturing Company! Prodist has a proud history and partnership with A-Kraft, having been the sole distributor of their products in South Africa for over 20 years.

A-Kraft boasts a history of hand tool manufacture of the highest standards for almost three decades since the company was established in 1988. Their products come with a lifetime guarantee on workmanship and material and are distributed across the globe where it has earned a reputation for high quality products that get the job done.

The A-Kraft product range includes primarily ¼, 3/8, ½, ¾ and 1 inch drive sockets, socket wrenches and various types of combination wrenches and ratchet wrenches – the kind of products used for the repair of cars, trucks and similarly sized machinery. The range of hand tools one can expect include screwdrivers, pliers, bit sets, tool cabinets and many more. A-Kraft prides itself in making combination sets of its products available to customers in easy to carry cases, perfectly created for customer convenience. **PD**



A-KRAFT TOOLS

TEN TOP TIPS FROM ENERGISER TO PROLONG YOUR BATTERY LIFE



WANT THE BEST PERFORMANCE FROM YOUR ENERGISER BATTERIES? FOLLOW THESE TOP TIPS AND MAKE THEM LAST LONGER WHILE GETTING THE MOST OUT OF THEM.



1. Locations that are too warm will reduce a battery's life. Store all batteries in a cool, dry place.
2. New rechargeable batteries come in a discharged state and must be charged prior to use. Both new batteries, and batteries which have not been used for a long period of time, should be conditioned 3-4 times before they can achieve maximum capacity.
3. Avoid dropping or damaging the battery case to avoid exposure of corrosive contents.
4. Keep batteries neatly organised and do not let the ends touch. A short-circuit can cause severe damage to the battery, or even cause it to explode.
5. Do not mix and match batteries. Always use the same chemistry, capacity and brand. Never mix rechargeable and non-rechargeable batteries.
6. Batteries that are not in use for a month or longer should be removed from chargers and stored in a cool, dry place.
7. Due to engineering improvements over the years, "memory effect" now rarely occurs. When memory effect does occur it is primarily in NiCad batteries. NiMH batteries are rarely affected, and Li-Ion batteries are never affected.
8. NiMH batteries will self-discharge when not in use, which means if they are not charged semi-regularly, they could discharge beyond revival.
9. Select a charger that prevents overcharging and is designed specifically for your battery's chemistry. It is recommended that the same brand of charger and recharge battery be used.
10. Do not carry NiMH rechargeable batteries loose in your pocket. Coins or other items could cause them to short, causing severe burns and fire. **PD**

PROTEK SE RIGLYNE VIR DIE VERSORGING VAN GRASPERKE

OM 'N DIGTE, KORT, SAGTE GRASOPPERVLAK TE WAARBORG, MOET GRAS NIE TE KORT EN EERDER MEER GEREELD GESNY WORD.

Vir nuwe grasperke moet die gras sowat 3-4cm hoog staan voordat dit die eerste keer gesny word. Verminder dan die hoogte geleidelik tot so 2cm. Moenie meer as 'n derde van 'n grasspriet afsny nie. Sodoende handhaaf jy 'n balans met die wortelstelsel wat die plant voed. Sou die plant te kort afgesny word, kan dit brandskade aan die plantkroon veroorsaak en 'n vlak wortelstelsel tot gevolg hê.

'n Goeie riglyn is om jou gras een maal per week te sny gedurende die groeiseisoen, maar dit kan wissel na gelang van die tempo waarteen die gras groei. Deur die ringting waarin die gras gesny word af te wissel, kan 'n gladde oppervlak verkry word.

Graswortels het lug nodig. Dus moet daar ontslae geraak word van die versmorende bedekkings dooie blare en stingels wat onder die groen gras versamel het. Die beste tyd om jou grasperk te "ontmat", is kort voor die begin van die reënseisoen. Sny dan die gras dieper en gebruik 'n hark om die dooie blare en lopers van die wortels af weg te krap.

Hierna moet die grond belug word. Dit word gedoen deur gaatjies oor die hele grasperk van sowat 10cm diep met 'n tuinvurk of spykerroller te maak.

Die 3de ding wat belangrik is vir 'n lowergroen grasperk is die regte bemesting:

Begin met 'n gebalanseerde bemestingstof soos Protek se 2.3.2 General Fertiliser wat ryk is aan stikstof om die blare te voed en fosfate om die wortelstelsel te versterk. Volg dit op met gereelde voedings van stikstofryke bemestings soos Protek KAN, afgewissel met Protek Lawn Fertiliser 7.1.3 of NutriGreen Gro Green elke 6 weke. Die afwisseling van stikstofryke kunmis help om te voorkom dat grond suur word. Die toediening van kunsmis moet geskied presies volgens die instuksies agter op die sak om oordosering te vermy.

In plaas van korrelkunsmis kan Protek se Guanoflo elke 6 weke op gras toegedien word om dit groen en gesond te hou. Laastens, maar seker amper die belangrikste, is om jou gras reg water te gee.

Gras se wortels lê ongeveer 15cm diep. Gras moet lank genoeg natgespuit word om te verseker dat daar genoeg water in die bogrondse groeilaag is. Die beste manier om 'n deurdringende neerslag tot op die gewenste diepte te verseker is met 'n roterende sprinkelaar. Hoe dikwels jy dit moet doen hang van die plaaslike klimaatstoestand af. Die gemiddelde behoefte van grasperke is 25mm water elke sewe dae. Dit kom neer op een uur se besprinkeling per week. Om siektes op die gras te beperk moet gras eerder vroeg in die oggend water kry as laat in die middag. **PD**



For your Home and Garden!



HUNPROS-02



HUNPROS-02



HUNPROS-02

FLIGHT

PRODUCT RANGE

instant and effective cleaning products

From the manufacturers
of the famous



Available in 500 ml,
1, 2, 5, 20 and
200 litres

FLIGHT HAND CLEANER Smooth or Grit

Flight will remove and clean :-

Grease & Grime, Ballpoint pen, Ingrained dirt, Road tar, Carbon, Wet paint, Soap scum and residue in bathrooms, Mould & Mildew, Oil stains on Laundry, Pots & Pans, Stove plates, Tile grouting, Stainless steel & Ceramic sinks.

Lanolin-enriched to give a soothing effect and to ensure that hands and skin are well looked after. Lanolin is used to treat or prevent dry, rough, scaly, itchy skin (e.g. eczema, keratosis, psoriasis). Flight is solvent based, which gives it the edge in removing tough dirt, including almost any industrial dirt.

Flight hand cleaner can be used with or without water.
Wipe off with a clean cloth.

FLIGHT SPRAY CLEAN

Flight has been tested by the SABS and is proven to kill 99.9% of all known germs. Flight is registered with the NRCS as an anti-bacterial detergent, is biodegradable, non-toxic, contains no bleach or ammonia, is non-abrasive and non-flammable.

For full anti-bacterial effect – spray on and leave for 5 minutes and wipe off. FSK can be used in its concentrated form or diluted up to 25:1.



Available in 500 ml,
2, 5 and 20 litres

FLIGHT M7 DEGREASER

M7 is a blend of powerful degreaser solvents, detergents and emulsifiers, designed to completely remove any grease, oil or grime from engines, gearboxes and industrial machinery. M7 is water soluble, allowing all dirt to be rinsed away with water after application. M7 is ph neutral and contains no acid or caustic material. M7 is brilliant for cleaning workshop floors. M7 cleans ALL industrial and automotive components.

Brush or spray M7 onto the surface to be cleaned. Saturate heavy dirt deposits with M7. Leave for 2-5 minutes and wash off with water.



Available in 500 ml,
2, 5 and 20 litres

www.q20.co.za • info@tritonleo.co.za

Johannesburg 011 452 7048 • Durban 031 579 4462 • Cape Town 021 702 4116



LES JOU DORS NA AVONTUUR

Ons is almal lief vir die buitelig, die gevoel van avontuur of net die rustigheid. Jy kan die prag en wonder van die buitelewe soveel meer geniet met die gehalte en bekostigbaarheid van die Basecamp reeks. Of jy'n avontuurlustige persoon of'n entoesiastiese kampeerder is, Basecamp sal jou help ontsnap.



SPRAY-PAINTING TECHNIQUES FOR THE BEST FINISHES

PAINTING WITH A SPRAY CAN LIKE THE SPRAYON RANGE AVAILABLE FROM PRODIST, IS A PIECE OF CAKE

However, if you want to get the most out of it and leave your just-painted surfaces gleaming with perfection, take heed of these pointers.

SPRAYON

- Start moving the can before you start spraying and keep the can moving in long, straight strokes.
- Hold the nozzle perpendicular to and 10 to 12 inches away from the surface
- Overlap each pass half the width of the spray coverage area to avoid leaving light areas or creating stripes.
- After you complete each area, stand back and look for light spots or missed areas.



SPPTT6

Now get the Sprayon range from Prodlist and begin!

Sprayon Tractor Touch-up Colours

Sprayon Tractor Touch-up Colours have been specifically chosen to provide a perfect match to the most popular tractor brands, farming implements and earth moving equipment. Available in 350ml in a range of 7 colours, Tractor Colours are specially formulated and quick drying with a hard finish that is resistant to peeling and cracking.



SPPHF3

Sprayon Hammer Finish Spray Paints

A speciality lacquer spray which gives a sprayed "Hammered" look. A very hard, durable, finish that is perfect for refurbishing equipment and for decorative purposes. Hammer Finish is available in 5 standard colours and in 350ml cans.



SPPSG1

Sprayon Spray Glow Fluorescent Spray Paints

Spray Glow is a bright fluorescent spray paint available in a range of 7 quick drying colours in 250ml aerosol cans. Spray glow is perfect for signage, hobbies and crafts where maximum visibility is required.



SPPEE2

Sprayon Engine Enamel Spray Paints

Sprayon engine Enamel is a specially formulated lacquer spray with heat resistant properties up to 200 degrees Celsius. Engine Enamel is available in 19 deep, rich durable colours which are resistant to peeling and cracking.

Contact Prodlist for the full range of Sprayon products or visit our website at www.prodlist.co.za

DRUPBESPROEIING

IN KORT

DRUPBESPROEIING IS TANS 'N BAIE GEWILDE KEUSE BY BESPROEINGSONTWERPERS EN BOERE.

Die droogte toestande in ons land veroorsaak dat almal baie mooi moet besin oor die keuse van 'n besproeiingstelsel. Drup is een van verskeie besproeiingstelsels en as gevolg van bepaalde voordele bly dit een van die gewildste keuses. Drup is egter net effektief as die stelsel baie goed ontwerp en bestuur word. In die geval van drup word water deur middel van 'n netwerk van pype vanaf die waterbron verplaas tot naby aan die gewas se wortelsone. Alhoewel die water gelokaliseerd toegedien word, versprei die water onder die drupper in die grond in die vorm van 'n omgekeerde ui. Hierdie welbekende verspreidingsvorm word beïnvloed deur kapillêre kragte in die grondstruktuur sowel as die druptempo van die drupper, asook die tydperk wat die drupper op daardie punt drup. Hierdie tipe toediening bied die volgende voordele:

- Meer doeltreffende waterbenutting (waterbesparing);
- Beperkte vervoerverliese, byvoorbeeld verdamping vanaf die grondoppervlak;
- Drupbesproeiing werk nie korsvorming in die hand nie en is nie struktuur vernietigend nie;
- Drupbesproeiing verhoed horisontale sowel as vertikale erosie;

- Drupbesproeiing maak plaagbeheer meer doeltreffend en koste-effektief.
- Goeie skeduleringpraktyke skep 'n gebalanseerde grond/water/suurstof-verhouding, wat weer aanleiding gee tot goeie water- en voedingsstof opname in die wortelsone.

Groente- en landbougewasse kan en sal maksimale opbrengs lewer wanneer klimaat, watertoediening, grondgesondheid en plantvoedsel in 'n optimale balans is. Die een aspek, watertoediening, is binne ons beheer. By Agriplas bied die Metzzerplas reeks van produkte 'n uitstekende voertuig vir effektiewe drupbesproeiing. Die hart van drupbesproeiing is die drupper wat gebruik word in die vervaardigingsproses van die drupperpyp. Die Metzzerplas druppers in die Agriplas stal bied 'n uitstekende en bekostigbare alternatief met die volgende tegniese eienskappe:

- 'n Plat drukregulerende en of nie-regulerende drupper met unieke regulerende eienskappe;
- Die plat drupper het 'n groot inlaat filter wat verstopping minimaliseer;
- Drupper vloeitempo is beskikbaar vanaf 0.8 liter per uur tot en met 3.5 liter per uur

Agriplas is die enigste plaaslike vervaardiger wat beide plat en silindriese drup vervaardig, onder andere ook VERED, VARDIT, LIN, ADI, IDIT en MINILIN.

Die Metzzerplas drupreëks is ook beskikbaar deur Prodist se besproeiing stelsel afdeling. Vir meer inligting, besoek www.agriplas.co.za of skakel 021 917 7177. **FD**

Perfekte oplossings in besproeiingsbestuur



Doen navraag by jou naaste besproeiings handelaar oor Agriplas Produkte

www.agriplas.co.za

KAAPSTAD - Hoofkantoor
Posbus 696, Brackenfell 7561
Tel: +27 21 917 7177
Faks: +27 21 917 7200

GAUTENG
Posbus 11052, Randhart 1457
Tel: +27 11 908 2204
Faks: +27 11 908 5312

MPUMALANGA
Suite 63, Postnet X 11326, Nelspruit 1200
Tel: +27 13 755 3510
Faks: +27 13 755 3505

agriplas 
PRECISE WATER MANAGEMENT SOLUTIONS

EFFICIENT IRRIGATION SYSTEMS WITH HUNTER

A PROPERLY DESIGNED, MANAGED AND MAINTAINED IRRIGATION SYSTEM IS AN ESSENTIAL TOOL FOR A HEALTHY, FUNCTIONAL LANDSCAPE. EFFICIENT WATER USAGE SHOULD ALWAYS BE THE GOAL OF EVERY IRRIGATION SYSTEM.



Bringing together a combination of intelligent design, carefully controlled manufacturing and regular testing to ensure conformity to the strictest standards, Hunter has been able to create what performance studies have shown to be a truly exceptional product range to satisfy the needs of most professional irrigation designers. The complete range is available from Prodist.

The first step in designing a residential irrigation system is to measure the property and indicate the location of the house. On a separate piece of paper, sketch out your property and place your measurements on the sketch. Be sure to include all concrete walks and patios, driveways and fences. While you are busy with this, locate any trees, shrubs and lawns and draw them on the sketch. This will ensure that all the elements you need for the planning of your system are available at a glance on one document.

Most people guess or struggle with the correct time to water (irrigate) each area. Watering application rates will vary for different types of plants, soils and climates. New lawn must be kept moist and newly transplanted shrubs must be watered every day or two. Established plants will need deeper, less frequent watering.

The following guidelines will get you started.

1. Do not operate more than one valve at a time.
2. Water early in the morning when it is less windy and the pressure is the greatest. Early morning watering will also reduce water evaporation. Watering in the early evening is not recommended. A lawn is more likely to get diseases when wet for a long period of time, especially overnight during the summer. Watering on a hot summer day may also burn the plants.
3. In most areas lawn requires 40mm to 50mm of water per week in the hottest months. Very hot and arid areas may require even more.
4. Manually activate your system every few weeks or so to make sure everything is operating correctly. Check and clean sprinklers to ensure proper functioning.

When designing an irrigation system it is important to ensure that the precipitation (rate at which water is applied), is even over each zone of the coverage. "Matched precipitation" is accomplished by selecting the appropriate nozzles, or zoning together sprinklers with the same precipitation rate. The two criteria to consider are the sprinkler's flow rate and the arc of covering. The illustration below depicts three different sprinkler heads with matched precipitation rates. In each case 10 litres per minute (L/M) is applied to each quarter circle and the precipitation is therefore matched.

90 Y = 10 L/M



180 Y = 20 L/M



360 Y = 40 L/M



WATERING GUIDELINES	
Cool, non-arid climates – apply 25mm of water per week	
Hot, arid climates – apply 50mm of water per week	
Clay soils, fine particles, Absorb water slowly	Program the controller with shorter run-times; increase the number of start times per day; decrease the number of water days per week
Loam soils, medium-sized particles, average absorption rate	Program the controller with longer run times and fewer start time cycles per week
Sandy soils, larger particles, absorb water quite rapidly	Program the controller with shorter run times; increase the number of start time cycles per day; increase the number of water days per week



Hunter Sprinkler PGP Gear Driven 50° to 360° HUNPGP-04-ULTRA



Hunter Spray Head Pro Pop Up 5cm HUNPROS-02



Hunter Sprayer Nozzle Pro
Adjust 360° **HUN10-A**



Hunter Valve Glove
PGV Jar Top 25 mm
HUNPGV-100-JTG-B



Hunter Indoor
XC Controller
HUNXC-601I-E

Hunter Outdoor
XC Controller
HUNXC-601-E



Water to apply each week	Spray sprinklers	PGJ Rotors	PGP Rotors	1-20 Rotors
25mm	40 min.	130 min	150 min	150 min
50mm	80 min.	260 min	300 min	300 min

Info courtesy of Hunter Industries. For more information contact Prodist on 0861 11 12 11 or via email on sales@prodist.co.za

RAM UNIVERSAL CLEANING KIT:



This cleaning kit is designed for multiple gun owners and incorporates some of the most popular gun calibre owned.

- 5 Section Take Down Steel Gun Cleaning Rods With Rotating Handle
- Gun Cleaning Bristle Brush (with Large and Small Bristle Sections)
- Phosphor Bronze Brush .22
- Phosphor Bronze Brush .30
- Phosphor Bronze Brush 12G
- Aluminum Jag .22
- Aluminum Jag .30
- Wool Mop 12G
- Cleaning Patches
- Trisol Gun Oil/Solvat 50ml
- Adaptor (English Thread) Small
- Adaptor (English Thread) Medium
- Adaptor (English Thread) Large



LiteOptec (Pty) Ltd | T +27 11 462 6986 | www.liteoptec.co.za

Best ingredients. Best protection.

The same detailed approach to quality goes into every Engen Lubricant, ensuring that your vehicle is kept in supreme condition and protected every step of the way. Made with the finest base oils and leading additives, they're designed to guard your engine against wear and corrosion, even in Africa's harsh environment. We put our best in, so that you can get the best out.



FIG. ONE TOWN INDUSTRIES

WHY DO MOZZIES ATTACK? SOME PEOPLE AND AVOID OTHERS?

EVER WONDER WHY AFTER A NIGHT OF QUALITY TIME WITH FRIENDS LIKE JOHNNY WALKER, JACK DANIELS OR EVEN OOM KLIPPIES OUT IN THE BUSH, YOU WAKE UP COVERED IN MOZZIE BITES, BUT SOME OF YOUR MATES ARE BUMP FREE?

Well, the clever people at the Smithsonian have some theories I thought we'd share with you before we go on to the killer

range of Raid bug repellent products we have on offer at Prodist.

An estimated 20% of people are especially delicious for mosquitoes, and get bitten more often on a consistent basis. And while scientists don't yet have a cure for the ailment, other than preventing bites with insect repellent (see Raid below), they do have a number of ideas as to why some of us are more prone to bites than others.

Here are two factors that could play a role:

Exercise and metabolism

Mosquitoes find victims at closer range by smelling the lactic acid, uric acid, ammonia

and other substances expelled via their sweat and are also attracted to people with higher body temperatures. Because strenuous exercise increases the build-up of lactic acid and heat in your body, it likely makes you stand out to the insects.

Beer

Just a single 12-ounce bottle of beer can make you more attractive to the insects, one study found. But even though researchers suspected this was because drinking increases the amount of ethanol excreted in sweat, or because it increases body temperature, neither of these factors were found to correlate with mosquito landings, making their affinity for drinkers something of a mystery. For the full article and more surprising causes visit www.smithsonianmag.com

However, if you'd like to be free of the burden of worrying about this irritating issue, just go to the Prodist website at www.prodist.co.za and order any one of the Raid insect repellents and make sure you stay mozzie and bug-free this summer.

Raid Power Mats and Electric Heater – SC629028

Comes with four mats and will keep you mozzie-free for up 14 hours.

Raid Automatic Multi Insect Control System – SC618562

Features the same killer qualities as the hand-held unit, although this is an indoor unit.

Raid Automatic Multi Insect Control System Re-fill – SC618563

Potent enough to take out malaria-carrying mozzies, this hand-held can of bug spray is designed to terminate flying and crawling beasties.

Raid Power Mats – SC122250

Comes in a box of 30 mats and does the job for 14 hours a shift. **PD**



INTRODUCING THE NEW FALCON FLAIL CUTTER

Launched at this year's NAMPO Harvest Day, the Falcon Flail Cutters represent a range of universal implements intended for a wide range of cutting applications. With a growing interest in the use of flail cutters for pasture topping, Falcon has introduced locally manufactured cutters that have the capability to do this job in an effective and cost-efficient manner with a faster turnaround time and more affordable spare parts.

The flail cutters are now available in sizes from 1,5m to 2,3m and are suitable for tractors between 35kW and 60kW.

Prodist takes care of the distribution of spare parts on the complete Falcon range. For more information on the new Falcon Flail Cutter, visit www.falcon.co.za **FD**



ON THE CUTTING EDGE
OF TECHNOLOGY

Grinding Techniques
(Pty) Ltd.



MANUFACTURERS & SUPPLIERS OF
SUPERIOR QUALITY ABRASIVES

super/flex **ANDOR**
STARCKE **DEERFOS**
SCHLEIFMITTELWERK

Tel +27 11 271 6400
info@grindtech.com

Fax +27 11 271 6464
www.grindtech.com

TYROLIT A TYROLIT • SWAROVSKI COMPANY

YANMAR



prodist
demand · supply · trust

For more information, visit
www.prodist.co.za or contact us on
powerproducts@prodist.co.za or
Tel: +27 (0)10 045 0742



NEWS

HOW TO CREATE THE COMPLETE

RAIN HARVESTING SYSTEM

THE CAPTURE, STORAGE AND DISTRIBUTION OF RAIN WATER COULD BE A VITAL RISK MITIGATION FACTOR IN A SUCCESSFUL FARMING OPERATION.

Rain Harvesting have created an efficient system to ensure that every drop of rainwater can be put to good use. Aside from acquiring the Rain Harvesting system from Prodist, it is recommended that you apply and install the following:

1. Check that the roof surface is suitable for collecting rainwater.
2. Install gutter mesh to prevent leaves and debris from blocking gutters.
3. Fit gutter outlets from the underside of the gutter to prevent obstruction of water flow.
4. Fit Leaf Eater or Leaf Beater rain heads to downpipes to prevent blocking. Rain heads deflect leaves and debris and keep mosquitoes out of pipes that hold water.
5. Install first flush diverters to help prevent the most contaminated rainwater from entering the tank.
6. Ensure a tank screen is installed at tank entry point to keep mosquitoes and pests out.
7. When choosing a water tank consider annual rainfall, roof catchment area and water usage when determining its size.
8. Attach insect proof screens or flap valves to the end of all pipes to the tank screen to keep mosquitoes and pests out and ensure that the tank is vented properly. Install an air gap to tank overflow outlets to prevent storm water backflow into your tank.
9. Utilise a tank top up system to automatically top up the tank with mains water when levels fall to a designated minimum level.
10. Select a pump system if to distribute water for use inside or outside the home.
11. Fit a purpose designed rainwater filter after the pump to help reduce residual sediment, colour and odour.
12. Install a Tank Gauge water level indicator to your rainwater tank to monitor your level and usage.

All components above are available from Prodist. Contact Gert Hutten at gert.hutten@prodist.co.za

Rain Harvesting

Rain Harvesting

We stock over a 1000 irrigation and rainwater harvesting related products in our warehouse in Kya Sands and service hundreds of professional contractors and property owners every day.

In Ground Rain Tanks

Wetec (Pty) Ltd | info@wetec.co.za | <http://www.wetec.co.za> | 011 708 7950

WORTEX

Centrifugal self-priming pump

Household and industrial booster pump

Submersible pumps and submersible pump motors

Italian

agpro

prodist
demand · supply · trust

Available at selected dealers - nationwide.
For more information, visit us at www.prodlist.co.za

MAAK SEKER JOU PAPEGAAI BLY PRAGTIG

DRAKENSBERG PAPEGAAIKOS WAT DEUR PRIDE MILLING VOORBEREI WORD IS NOU BESKIKBAAR BY PRODIST OM SEKER TE MAAK HIERDIE INTELLIGENTE VOËLS BLY IN PUIK KONDISIE.

Om te floreer benodig meeste papegaie en voëls, neute, sade en ander plantmateriaal vir 'n goed gebalanseerde, gesonde, tog afwisselende dieet. Papegaie is een van die mees intelligente voëls en is 'n uitstekende troeteldiere. Indien jou papegaaï in 'n huis woon is verskeidenheid soveel meer belangrik. Hoe

meer gevarieerd sy dieet, hoe beter is absorpsie van minerale en vitamieni. Papegaie, soos die meeste voëlspecies, verbrand kalorieë baie vinnig weens hul vinnige en hoë metabolisme. Vir die redé benodig hul addisionele goeie voeding-sware wat beskik oor hoë energie. Koolhidrate moet dus beskikbaar wees in groot hoeveelhede vir omskakeling na energie.

Drakensberg Papegaaikos word geproduseer deur Pride Milling en het bekend geraak vir voortreflike kwaliteit en goeie waarde vir geld. Drakensberg is wetenskaplik geformuleer met toegevoegde rooi chillies om te verseker jou papegaaï word voorsien van goed gebalanseerde afwisselende saad wat voordelig is vir sy dieet. Die bestanddele is trots Suid Afrikaanse kommoditeite.

Die lys van Drakensberg produkte sluit in tuin voëls, wilde voëls, kokketiel en budgie sade. **PD**



PRIDE043



*Just add
love!*

DRAKENSBERG

BIRDSEED & PETFOOD RANGE



TALON-TAAI

Talon Tough Tools het 30 jaar daaraan gewy om duursame toerusting te ontwikkel en aan die wêreldmark te verskaf. Elke produk lewer elke keer betroubare gehalteprestasie. Die Talon-tuinprodukkreeks is gebou om Suid-Afrika se strafste toestande te deurstaan en sluit 'n verskeidenheid van elektriese en petrolkettingsaie, snyers en heiningknippers asook petrolaangedrewe grassnyers, waterpompe en kragopwekkers in. Alle Talon-toerusting word gedek deur 'n omvattende eenjaarwaarborg van Creative Equipment.



Tree met ons in verbinding vir jou
naaste handelaar: 011 828 5085
sales@talontools.co.za
www.talontools.co.za

TALON[™]
TOUGH TOOLS

HAWKINS

Product Range



POWER 10 BATTERY CHARGER

- Is a simple taper charger
- Only for charging re-fillable type batteries
- Its output current is 6.6 Amp
- Suitable for charging batteries between 10 and 75 Ah capacity
- Cannot be left connected to a battery indefinitely



PRO 615 BATTERY CHARGER

- Input Voltage: 230V a.c
- Weight: 17,4 kg
- Dimensions (LxHxW): 445 x 200 x 220mm
- Voltage: 12Volts, 24Volt and 36Volt



PRO 15 BATTERY CHARGER

- Input Voltage: 230V a.c
- Weight: 6.3 kg
- Dimensions (LxHxW): 315 x 210 x 210mm
- Voltage: 6Volts, 12Volt and 24Volt

Hawkins is the leading South African battery charger manufacturer since 1961

HAWKINS 
MANUFACTURING (Pty) LTD